

- Add Linuo Hi-tech Park, No.30766 East Jingshi Road, Jinan, Shandong, China
- Hotline 0086-531-8872-9696(International) 400-658-61999(CN)
- Email pv@linuo.com

LNPV-125*125-LN (195-210W mono)

Why Linuo Modules?



(0,+5W) plus tolerance



3 times of 100% EL



25 years Irrevocable warranty insurance



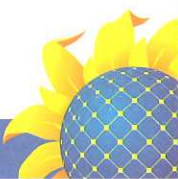
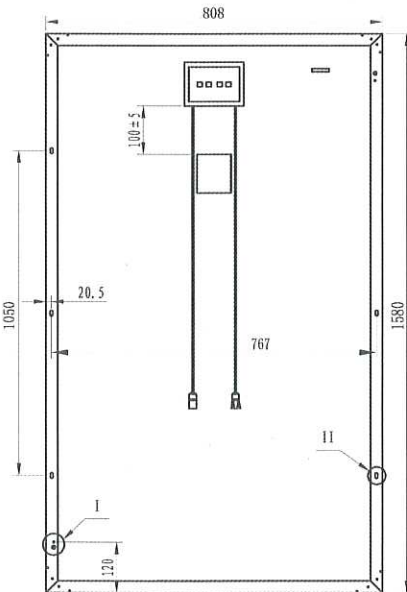
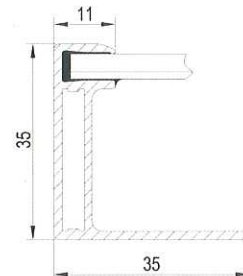
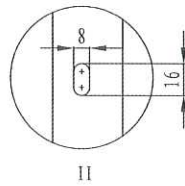
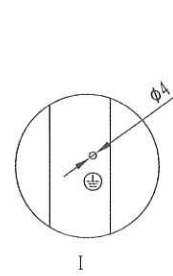
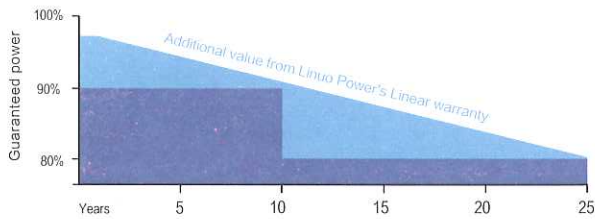
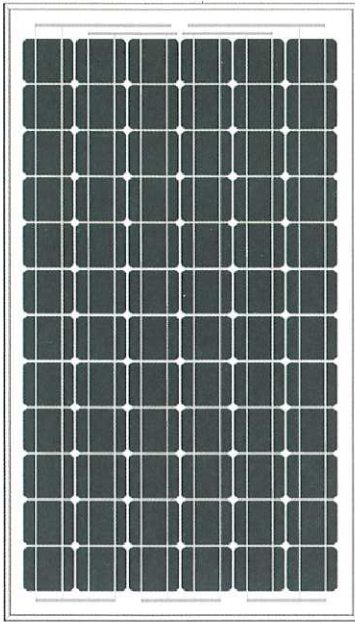
5400pa snow load and 2400pa wind load



High performance in low solar irradiation



Resistance to ammonia & salt mist corrosion



- Add Linuo Hi-Tech Park, No.30766 East Jingshi Road, Jinan, Shandong, China
- Hotline 0086-531-8872-9696(International) 400-658-61999(CH)
- Email pv@linuo.com

Electrical data

Pmax (W)	Uoc (V)	Isc (A)	Umpp (V)	Impp (A)	FF	Module efficiency	Max system voltage	Max series fuse
195	45.23	5.66	36.87	5.29	76.19%	15.27%	1000V	10A
200	45.66	5.69	37.67	5.31	76.99%	15.67%		
205	46.09	5.72	38.32	5.35	77.76%	16.06%		
210	46.52	5.75	39.11	5.37	78.52%	16.45%		

Temperature rating

temperature cycling range:	-40°C to +85°C
nominal operating cell temperature:	48 °C
temperature coefficient of Isc:	0.027%/°C
temperature coefficient of Voc:	-0.337%/°C
temperature coefficient of Pmax:	-0.469%/°C

Mechanical data

module dimension:	1580*808*35mm
weight:	15.5kg
mechanical load:	5400 pascals
number of cells:	72pcs
thickness of glass:	3.2mm

Warranty

10 years warranty
on materials workmanship and module defect
25 years performance warranty
(10 years at 90%, 25 years at 80%)

Packaging configuration

modules per pallet:	28 pcs
modules per 40'GP:	784 pcs

I-V curve of 195W mono module

